

ABERDEEN - PLAT NO. 18

A PORTION OF A P.U.D.
LYING IN SECTION 16, TOWNSHIP 45 SOUTH, RANGE 42 EAST
BEING A REPLAT OF A PORTION OF ABERDEEN - PLAT NO. 2 AS RECORDED IN PLAT
BOOK 55, PAGES 11 THRU 22, PUBLIC RECORDS OF PALM BEACH COUNTY, FLORIDA
SHEET 4 OF 4

ABERDEEN - PLAT NO. 17
(PLAT BOOK 71, PAGES 128 THRU 132)

STATE OF FLORIDA
COUNTY OF PALM BEACH
This Plat was filed for record at _____
M. This day of _____, 18____
and duly recorded in Plat Book No. _____
on Page _____
Dorothy H. Wilken, Clerk of the Circuit Court
By _____ D.C.

COORDINATE NOTE:

STATE PLANE COORDINATES SHOWN ARE GRID DATUM, NAD 83 1990
ADJUSTMENT, FLORIDA EAST ZONE, COORDINATE SYSTEM 1983 STATE PLANE,
TRANSVERSE MERCATOR PROJECTION
LINEAR UNIT = US SURVEY FEET
ALL DISTANCES ARE GROUND
SCALE FACTOR = 1.0000257
GROUND DISTANCE X SCALE FACTOR = GRID DISTANCE

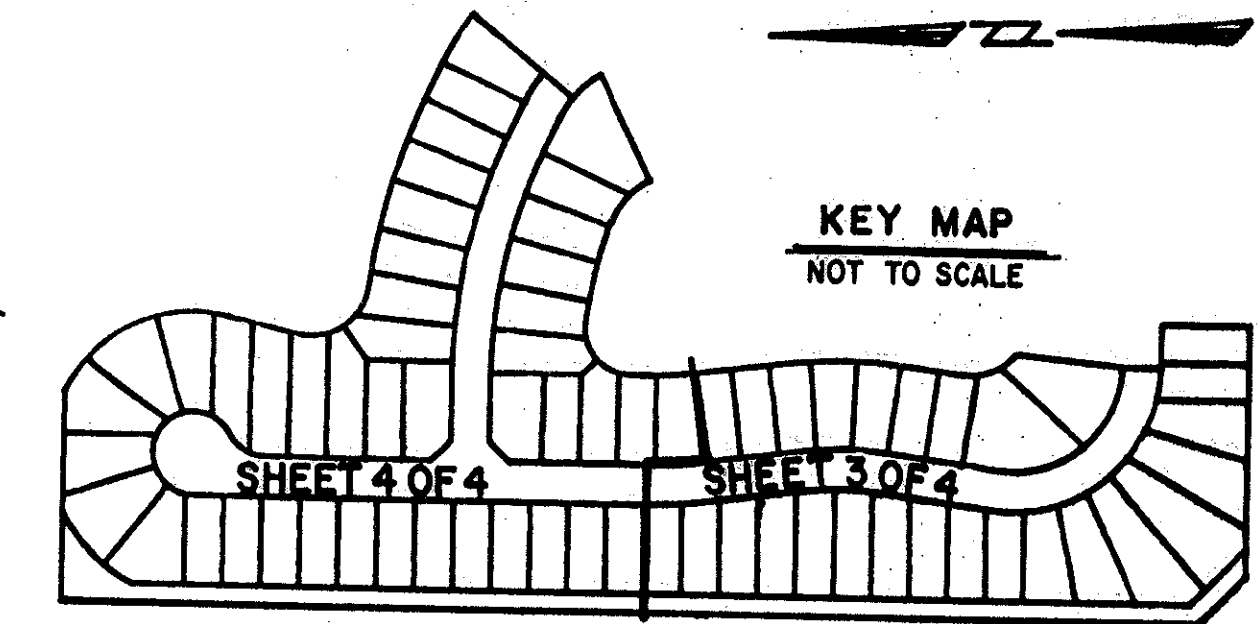
N 01°45'26" E (PLAT BEARING) -01°45'31" COUNTER CLOCKWISE
N 00°00'05" W (GRID BEARING) BEARING ROTATION
(PLAT TO GRID)

COMMON LINE BETWEEN PLAT AND THE WEST LINE OF SECTION 16/45/42. ALSO
THE WEST LINE OF ABERDEEN - PLAT NO. 2 (PLAT BOOK 55, PAGES 11 THRU 22).

NOTE:

IT IS MUTUALLY AGREED BETWEEN GRANTOR AND GRANTEE THAT THIS
EASEMENT MAY BE MODIFIED OR REALIGNED IN A SUBSEQUENTLY RECORDED
PLAT INCORPORATING THIS OR A SIMILARLY LOCATED EASEMENT FOR
DRAINAGE PURPOSES. THE FILING OF SUCH A PLAT, WHICH CONTAINS AN
EASEMENT FOR DRAINAGE, SIMILAR IN LOCATION AND PURPOSE TO THE
EASEMENT CREATED HEREIN, SHALL SERVE TO AUTOMATICALLY TERMINATE
THIS EASEMENT, WHICH SHALL THEREAFTER BE OF NO FURTHER FORCE AND
EFFECT.

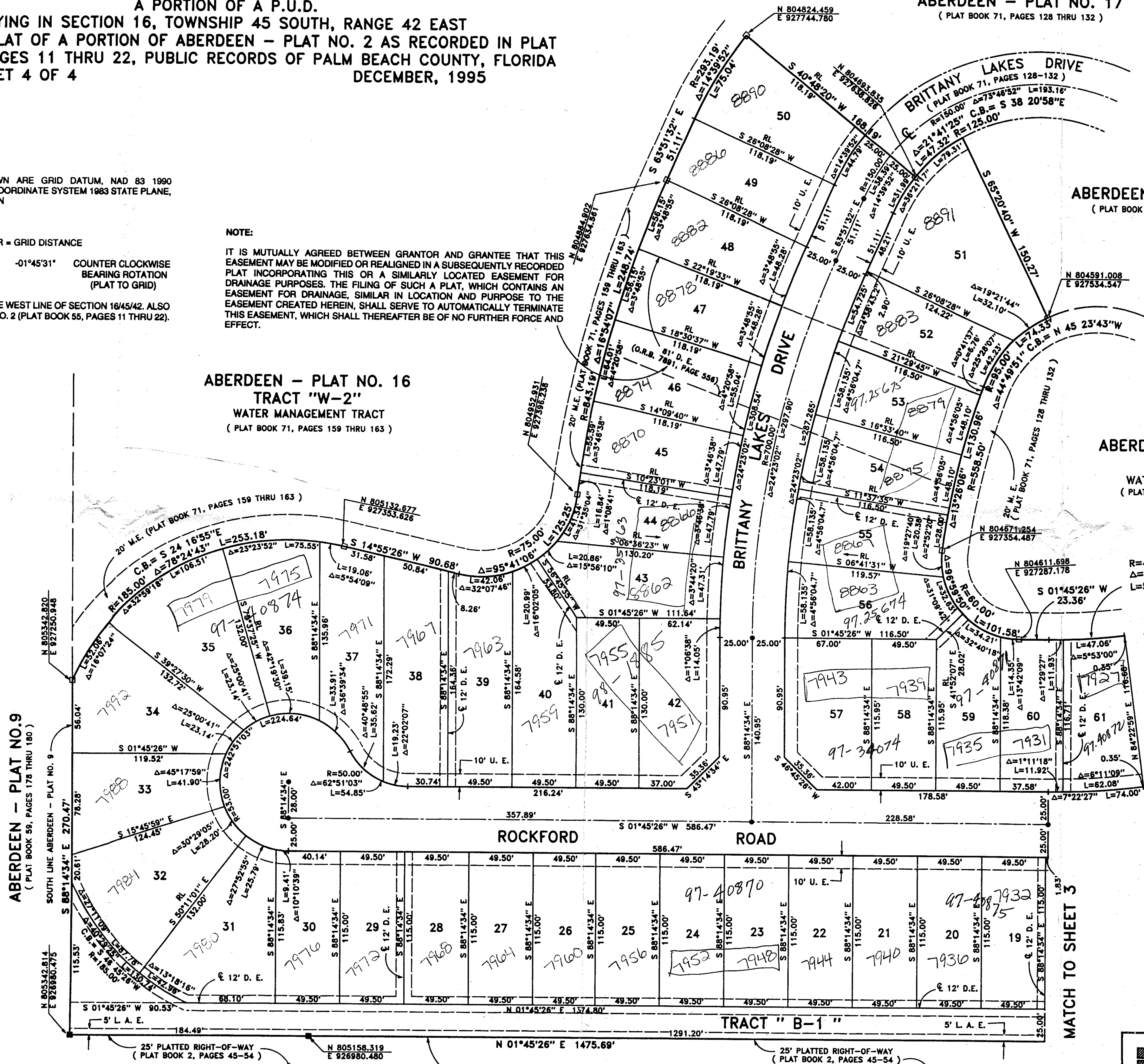
ABERDEEN - PLAT NO. 17
(PLAT BOOK 71, PAGES 128 THRU 132)



KEY MAP
NOT TO SCALE

ABERDEEN - PLAT NO. 16
TRACT "W-2"
WATER MANAGEMENT TRACT
(PLAT BOOK 71, PAGES 159 THRU 163)

ABERDEEN - PLAT NO. 17
TRACT "W-4"
WATER MANAGEMENT TRACT
(PLAT BOOK 71, PAGES 128 THRU 132)



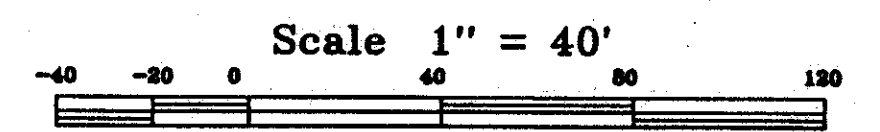
ABERDEEN - PLAT NO. 9
(PLAT BOOK 59, PAGES 178 THRU 180)

ROCKFORD ROAD

TRACT "B-1"

PALM BEACH FARMS PLAT NO. 3
(PLAT BOOK 2, PAGES 45-54)

PALM BEACH FARMS PLAT NO. 3
(PLAT BOOK 2, PAGES 45-54)



SUBDIVISION # ABERDEEN
BOOK 78 PAGE 62
FLOOD MAP #115A
ZONING RS
49
80-153 ZIP CODE 33437
P.U.D. NAME ABERDEEN
TAZ - 442

Landmark Surveying & Mapping Inc.
1850 FOREST HILL BOULEVARD
PH. (407)433-5405 SUITE 100 W.P.B. FLORIDA

ABERDEEN - PLAT NO. 18